



ISY994i Series Quick Setup Guide

1. ISY Installation

1. Connect one of the included Cat5e cable to ISY's **Network Port** and to your network hub. **Note:** the network must *initially* be DHCP enabled. If DHCP is not enabled, please configure ISY with a static IP address the instructions for which you will find [here](#).
2. Connect the second included Cat5e cable to ISY's **Port A** and the other end to the PLM
Note: If your PLM is model number **2413S**, you do need a power supply (included)

2. Host Computer Configuration

- A. If you do not have Java installed, please install the latest for your platform. You may find the latest Java downloads at <http://www.java.com/getjava>. Please choose the latest JRE for your platform
- B. Follow [these instructions](#) to install ISY Finder/Launcher app (Figure 1) on your desktop which should be used here on out. Click on your ISY on the list which brings up the launch menu
 - a. Click on the **Admin Console** menu item to perform the rest of the setup in this document
 - b. When prompted to authenticate, enter **admin** for both username and password

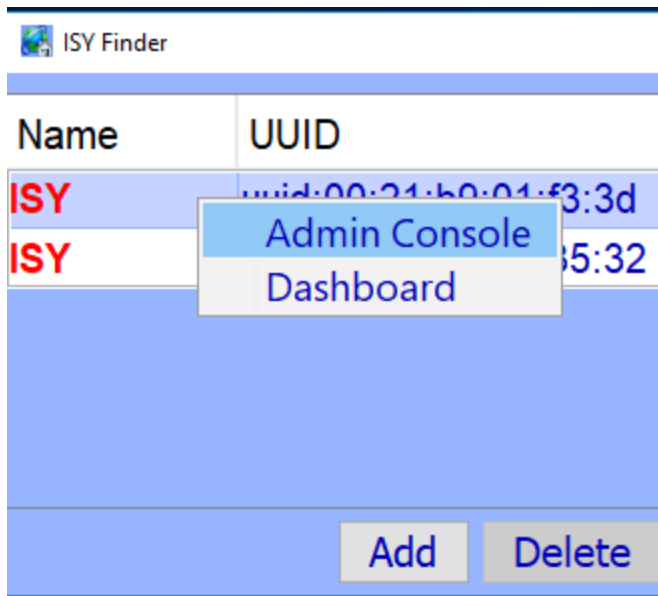


Figure 1 – ISY Finder/Launcher

- C. On Universal Devices Administrative Console, choose **Help | About** (Figure 2)
- D. On the About Dialog, locate **My URL** and write down the URL. For example, in Figure 2b, the URL is **http://192.168.0.128**. You may also access your ISY using this URL (as long as your router does not change the address for ISY)
 - a. On Windows machines, you can access ISY by its name: <http://isy>

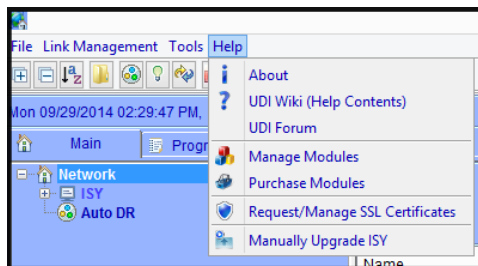


Figure 2 – Help Menu

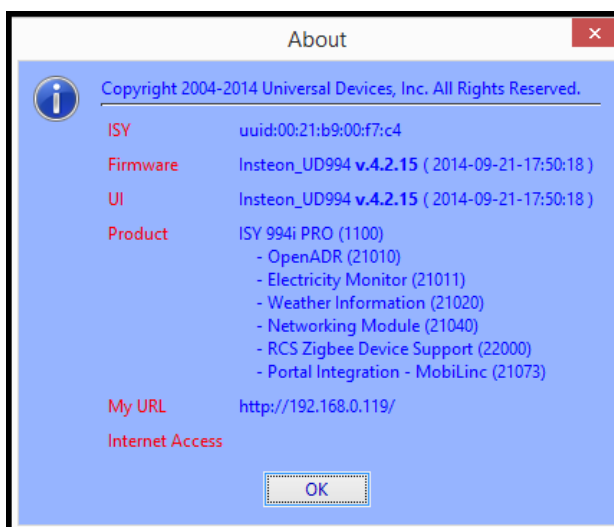


Figure 2B – Help | About

3. Set Time and Location

Click on the **Configuration | System** tab and set the Time and the Physical Location for the unit (used for Sunrise/Sunset calculations). See Figure 3A.

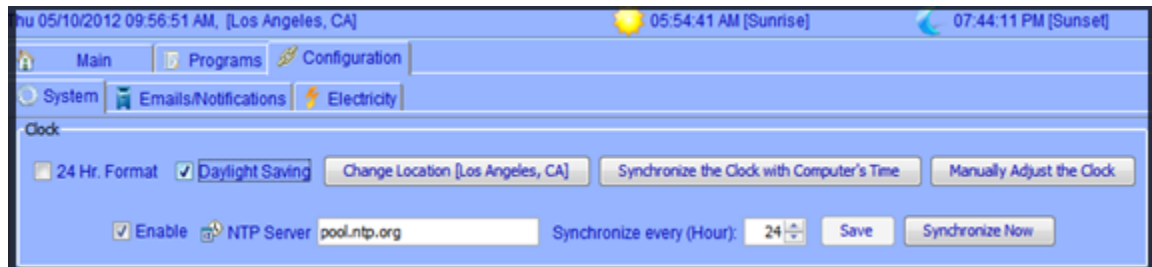



Figure 3A

4. Start Adding Your Devices

A. INSTEON

Click on the  icon and *then follow the instructions on the screen*. Continue linking as many devices as desired before clicking on the Finish button. See Figure 3C.

For more comprehensive and in-depth INSTEON instructions, tutorials, and example, please review our [Wiki section on INSTEON](#).

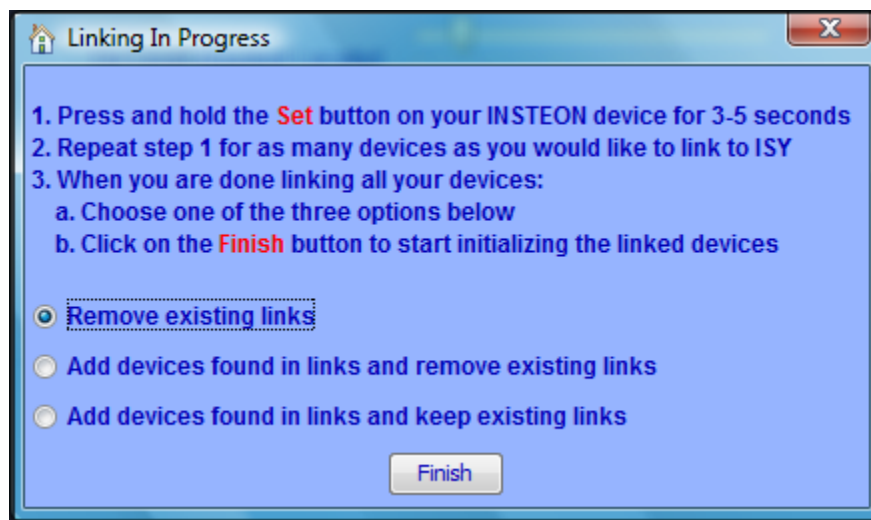
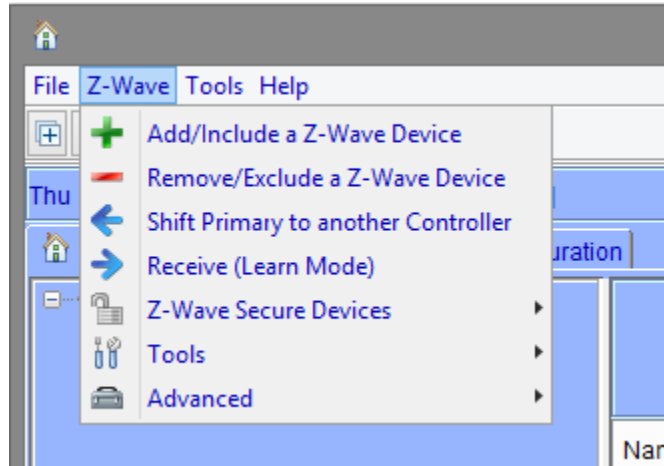


Figure 3C

B. Z-Wave (ISY994i ZW Series Only)

For Z-Wave devices, you must first exclude the device and then include it. Choose **Z-Wave | Remove / Exclude a Z-Wave Device** menu item to exclude a device and then **Z-Wave | Add / Include a Z-Wave Device** to include the device (Figure 4).



For more comprehensive and in-depth Z-Wave instructions, please review our [Wiki section on Z-Wave](#).

5. Create a Program

Click on the **Programs | Details** tab and you will see a sample **Query All** program. Below that there is an option to “Add Program” Click on that. The example for this program will be to turn On the Porch Light at 7pm and off 4 hours later. See Figure 3B.

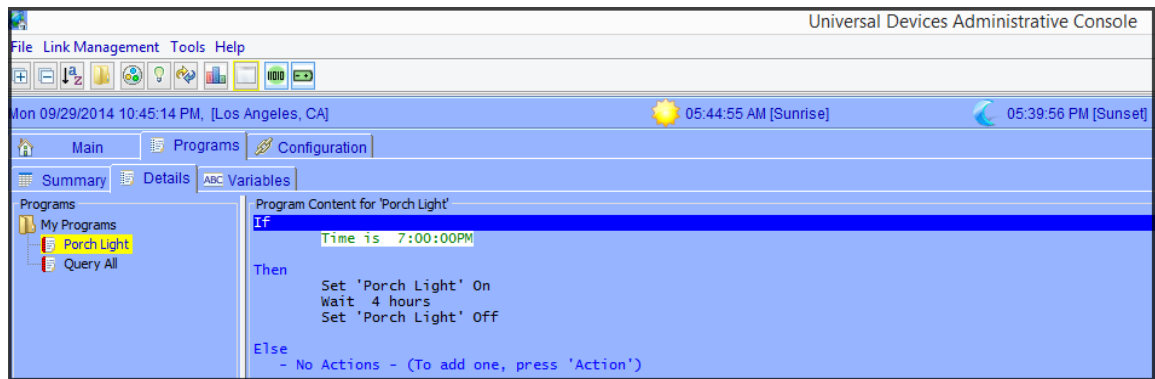


Figure 3B

For more comprehensive and in-depth instructions, tutorials, and example, please review our [Wiki section on Programs](#).

Please give our [Wiki](#) a look where you will find many resources, including videos, examples, tutorials, and even full user guides in PDF/Word formats.

For our Product and Technical Support Page please visit:

<https://www.universal-devices.com/udi-support>

Don't forget to register your unit to receive important enhancements, updates and upgrade information: <http://www.universal-devices.com/register>

ENJOY!