



ISY994 ZS Series – Smart Meter Configuration Guide

1) ISY Installation

- a) Connect one of the included Cat5e cable to ISY's **Network** Port and to your network hub. **Note:** the network must *initially* be DHCP enabled.
- b) If you do not have Java installed, please install the latest for your platform. You may find the latest Java downloads at <http://www.java.com/getjava>. Please choose the latest JRE for your platform
- c) Follow [these instructions](#) to install ISY Finder/Launcher app (Figure 1) on your desktop which should be used here on out. Click on your ISY on the list which brings up the launch menu
 - a. Click on the **Dashboard** menu item to perform the rest of the setup in this document
 - b. In either case, when prompted to authenticate, enter **admin** for both username and password
 - c. In case you wish to add/configure INSTEON/Z-Wave devices or perform more advanced programming, from the same menu, choose the **Admin Console**

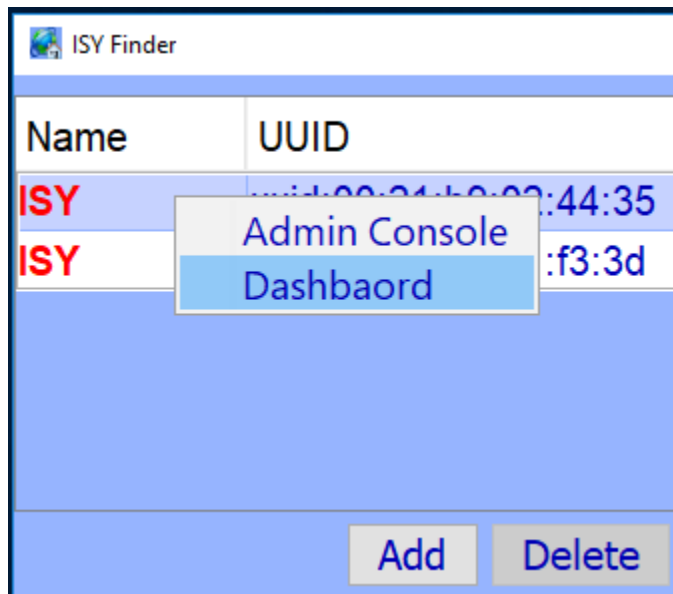


Figure 1 – ISY Finder/Launcher

- d) Make sure you have firmware version 4.2.18 or above (Figures 1A and 1B). If you do not, please upgrade to either an official release or the latest release:
<http://forum.universal-devices.com/forum/15-current-release-betas-and-bug-reports/>

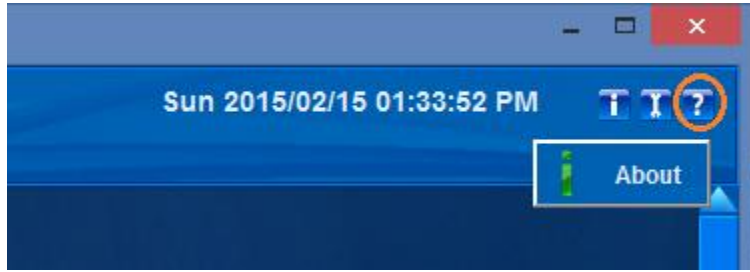


Figure 1A - About

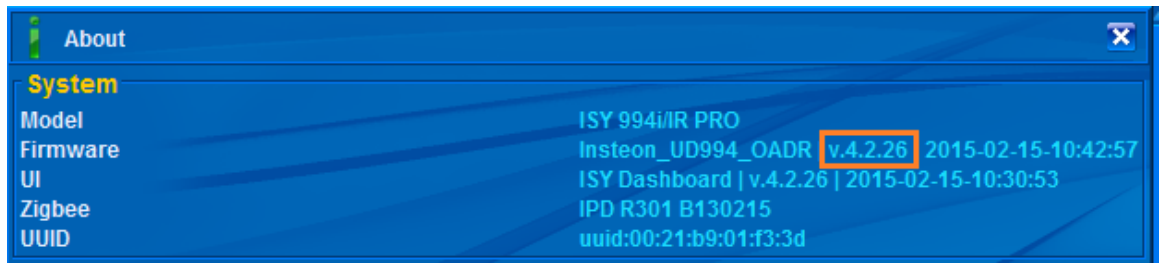


Figure 1B – Firmware version

2) Set Time and Location

- a) ISY scheduler uses prices sunrise and sunset times for various user defined programs. As such, it's of utmost importance to set the correct Location / Time zone (Figure 2A)

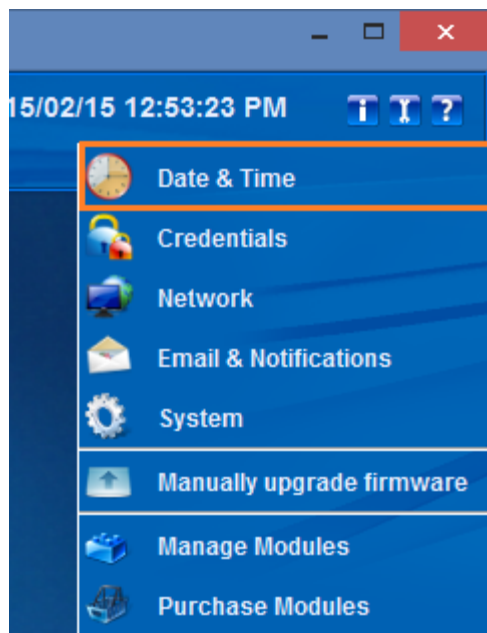


Figure 2A – Setting Time

3) Provisioning Smart Meter Communications

- a) From the Windows menu choose **My Electricity** menu item (Figure 3A1)
- b) Adjust the position of **My Electricity** window for ease of viewing (Figure 3A2)



Figure 3A1 – Choose My Electricity Window



Figure 3A2 – My Electricity Window

- c) In **My Electricity** window, click the **wrench** icon, and then click **Billing Info** (Figure 3B1 and 3B2)
- Base Price** is the price used in absence of any price information from your utility
 - Provider ID** is the name of your utility. If you find your utility provider listed, please choose it since different modes are used for each listed utility
 - Cycle Start** is used for calculating billing cycles and total monthly costs. This is the day/month when your billing cycle starts

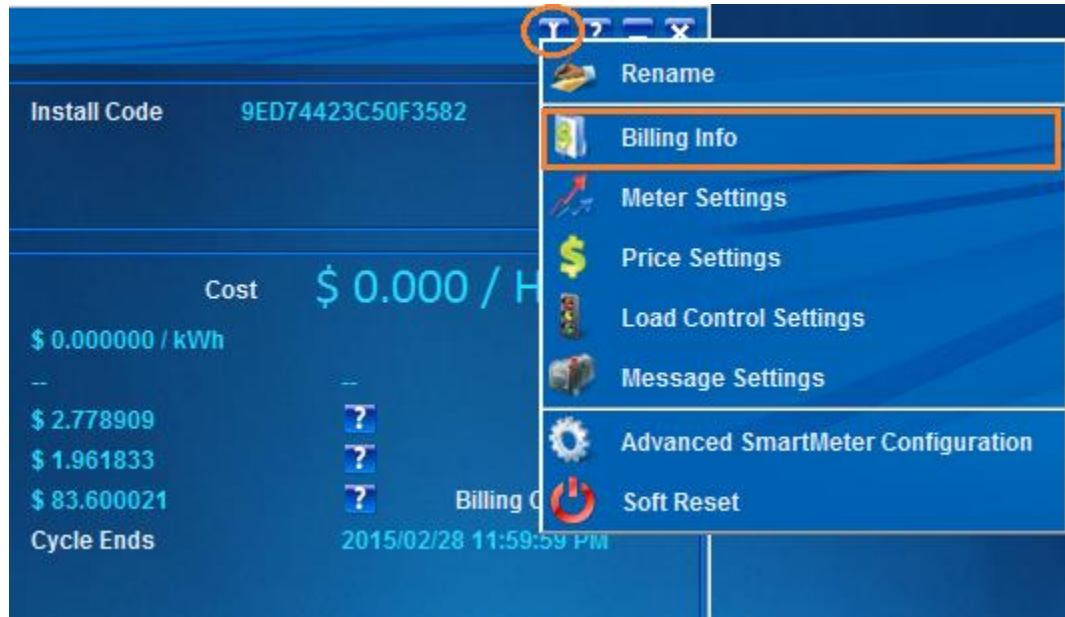


Figure 3B1 – Choose Billing Info

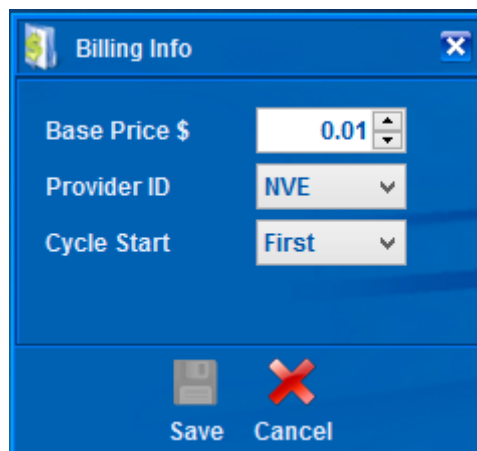


Figure 3B2 – Billing Info

- d) In **My Electricity** window, under **Status**, click the configuration button again (Figure 3C)
 - a. Right Mouse Click on the value for **EUID** | Copy and then paste to a text document
 - b. Right Mouse Click on the value for **Install Code** | Copy and paste into a text document
 - c. Provide the **EUID** and **Install Code** to your Utility Provider



Figure 3C – Copy EUID/Install Code and send to your utility provider

- e) At this point, ISY shall keep trying to join your Smart Meter network indefinitely and till successful. This might take up to 24 hours depending on the utility
 - a. You will see **Scanning**, and **Scan Complete** status till such time that your utility has registered ISY with your Smart Meter
 - b. Once successfully joined, you will see **Joined Securely** with other network information
 - c. Consumption, price, and messages should automatically flow to your ISY from the meter (Figure 3D)

The screenshot shows the 'My Electricity' web interface. At the top, there is a status bar with a lightning bolt icon and the text 'My Electricity'. Below this, there are several sections:

- Status:**
 - EUID: 0021ED0000062A5F
 - Install Code: 9ED74423C50F3582
 - Network: **Joined Securely | 9E6A | 001D2301001F844F | 23** (highlighted with an orange box)
 - Time: **Synchronized** (with a question mark icon)
- Summary:**
 - Inst. Demand: **2.378 kW**
 - Cost: **\$ 0.264 / Hour**
 - Price: Tier AAAAAAA, \$ 0.111111 / kWh
 - Next Price: TierBBBBBB, \$ 0.122222 / kWh, 2015/02/27 09:00:45 AM
 - Today: 25.466 kWh, \$ 2.822735 (with a question mark icon)
 - Yesterday: 51.160 kWh, \$ 1.961833 (with a question mark icon)
 - Month: 506.605 kWh, \$ 83.643845 (with a question mark icon)
 - All Time: 16034.492 kWh, Cycle Ends: 2015/02/28 11:59:59 PM (with a question mark icon)
 - Billing Cycle: (with a question mark icon)
- Buttons:**
 - List Prices (with a small bar chart icon)
 - Normal Polling** (with a gear icon, highlighted with an orange box)

Figure 3D – Network is established

- f) By default, ISY uses **Normal Polling** to poll meter information every 30 seconds. You can force ISY into **Fast Polling** mode in which case ISY polls meter information every 2 seconds. In order to go to **Fast Polling** mode, click on the **Normal Polling** button. **Fast Polling** mode stays in effect for 15 minutes or till such time that you click the **Fast Polling** button.

4) Advanced Smart Meter Configuration

WARNING:

ISY has been tested, fine-tuned, and certified to work with default configuration. Any changes to the settings in this section might render your ISY/Smart Meter communications nonoperational. Furthermore, you may no longer be able to communicate with the meter without re-commissioning ISY with your utility. In some cases, this may not be feasible at all and thus you will no longer be able to communicate with your Smart Meter.

If you continue to go ahead, please do at your own risk.

- a. Go to the About dialog and copy the UUID to clipboard (Figures 4A1 and 4A2)
- b. From My Electricity Window, click on the wrench and then click on the **Advanced Smart Meter Configuration** menu item (Figure 4B). You will be prompted for a password.
- c. Paste the UUID, copied in (a), into the password field (Figure 4C)

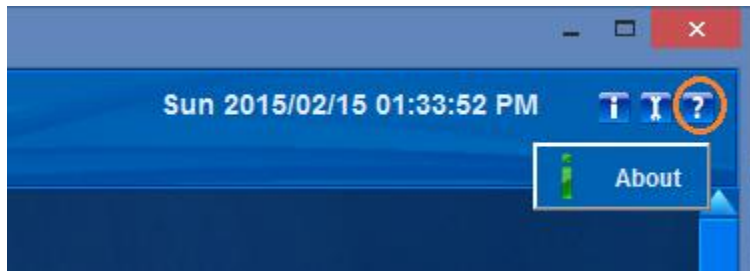


Figure 4A1 – About Menu

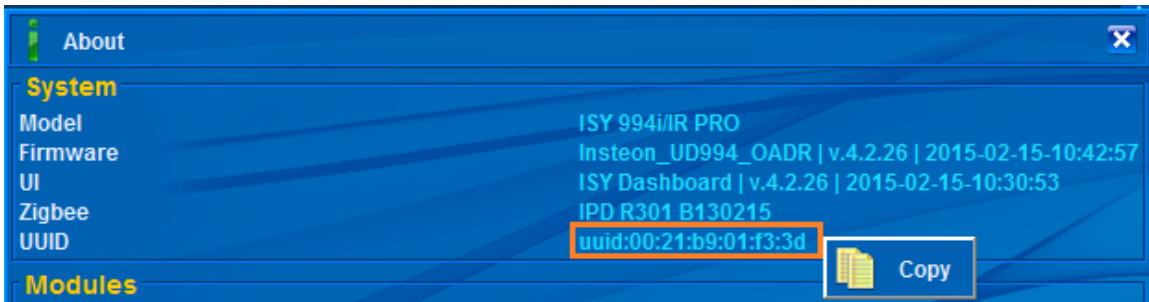


Figure 4A2 – About Dialog

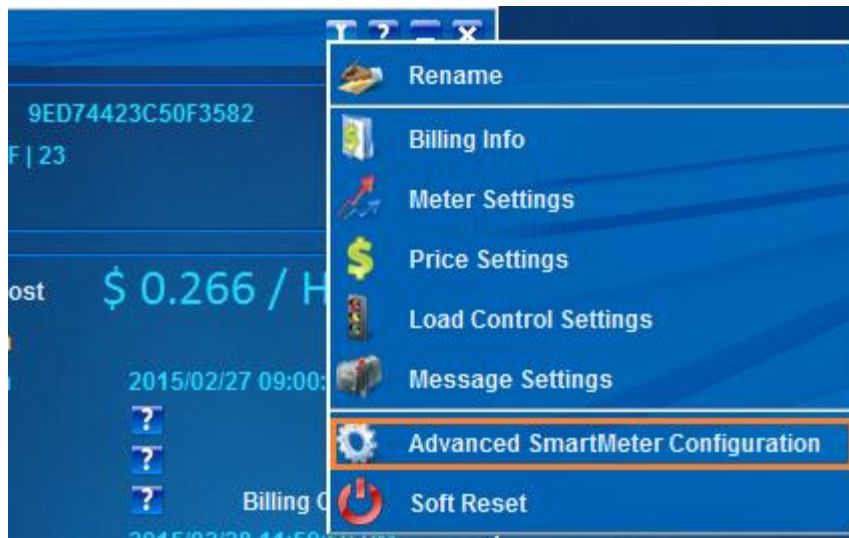


Figure 4B – Advanced Smart Meter Configuration

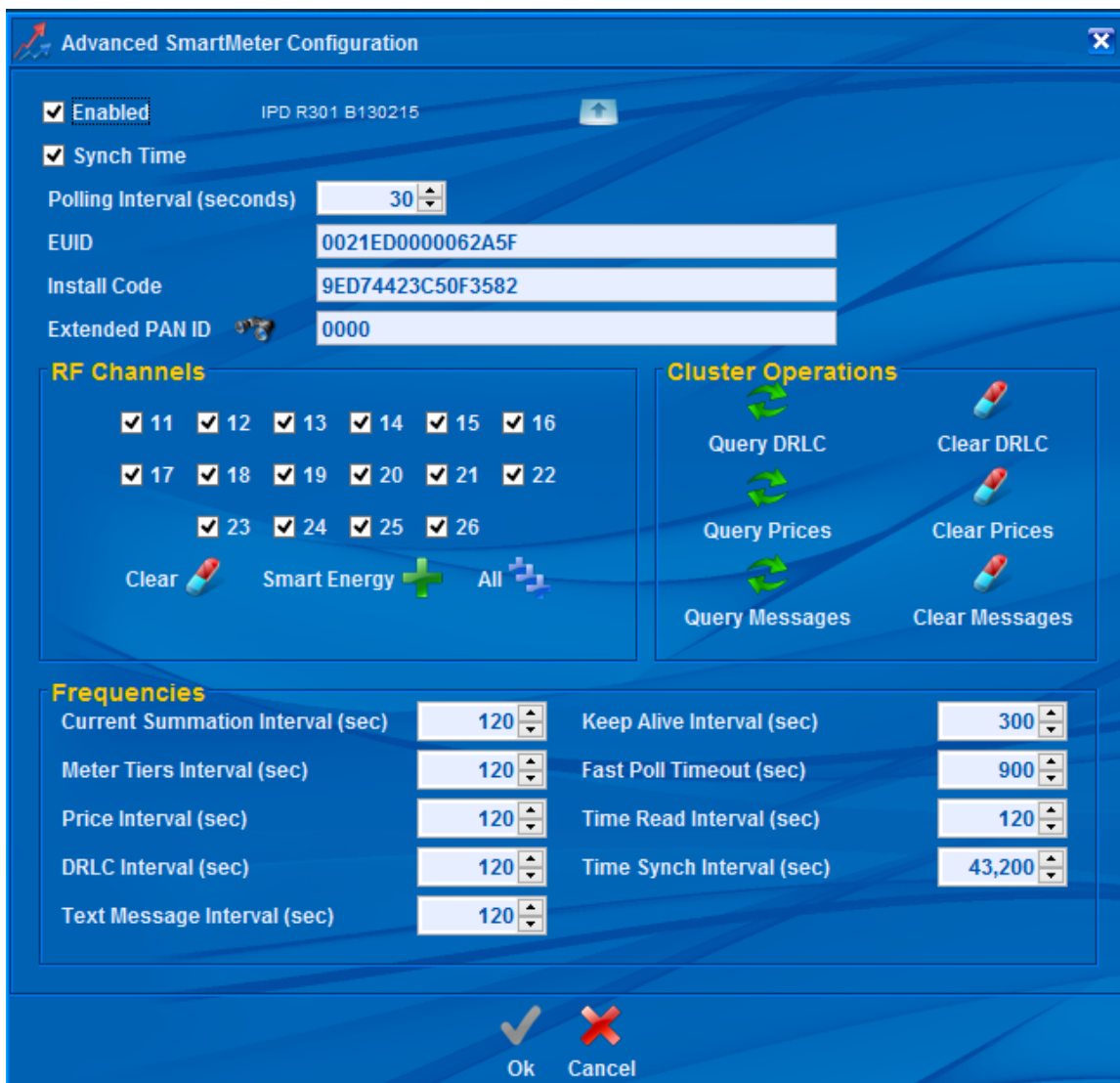


Figure 4C – Advanced Smart Meter Configuration

5) Soft Reset

WARNING:

Soft Reset decommissions ISY from your meter. Soft Reset will not remove personal usage data. If you wish to remove all personal data from ISY, please follow [ISY's Factory Reset](#) procedures.

In both cases, you will have to contact your utility to decommission ISY and commission it again to reestablish communications with your Smart Meter.

Password is the same as Advanced Meter Configuration (Figure 5).

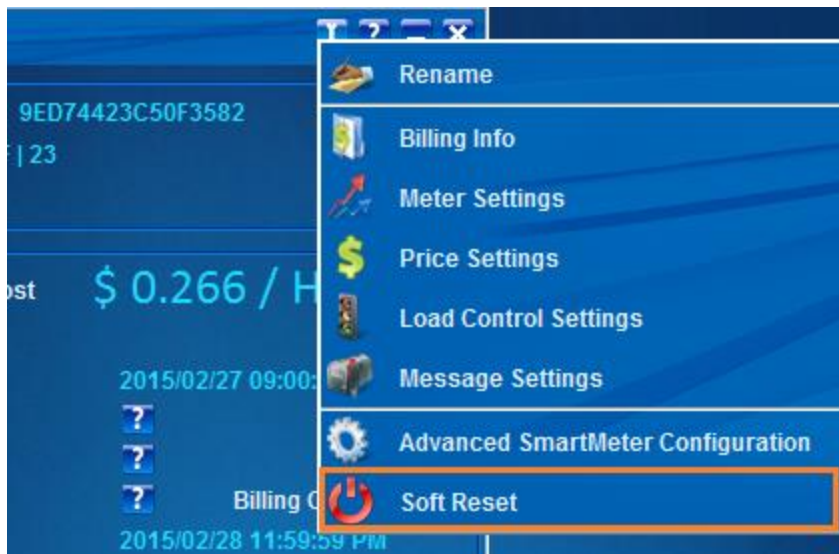


Figure 5 – Soft Reset

*For additional documentation, please visit <http://wiki.universal-devices.com>
Don't forget to register your unit to receive important enhancements, updates and upgrade
information: <http://www.universal-devices.com/register> ENJOY!*